



Aggregate, Negotiate + Share! | Stock Symbol: **GPOX**

## Product Features

CareStart™ COVID-19 Antigen Test by AccessBio

**HealthGPO**, a division of **GPO Plus, Inc.**

3571 E. Sunset Road | Suite 300

Las Vegas, Nevada 89120 USA

Toll Free: +1 855.922.4476 | [info@HealthGPO.com](mailto:info@HealthGPO.com) | [www.HealthGPO.com](http://www.HealthGPO.com)

**[www.HealthGPO.com](http://www.HealthGPO.com)**



# CareStart™ COVID-19 Ag

Rapid Diagnostic Test for the Detection  
of SARS-CoV-2 Antigen

- For *in vitro* diagnostic use only
- For prescription use only
- CLIA complexity: Waived
- FDA Emergency Use Authorization (EUA) Approved



The CareStart™ COVID-19 Antigen Test is a lateral flow immunochromatographic assay intended for the qualitative detection of the SARS-CoV-2 nucleocapsid protein in nasopharyngeal and nasal swab specimens directly collected from individuals who are suspected of COVID-19 by their healthcare provider.

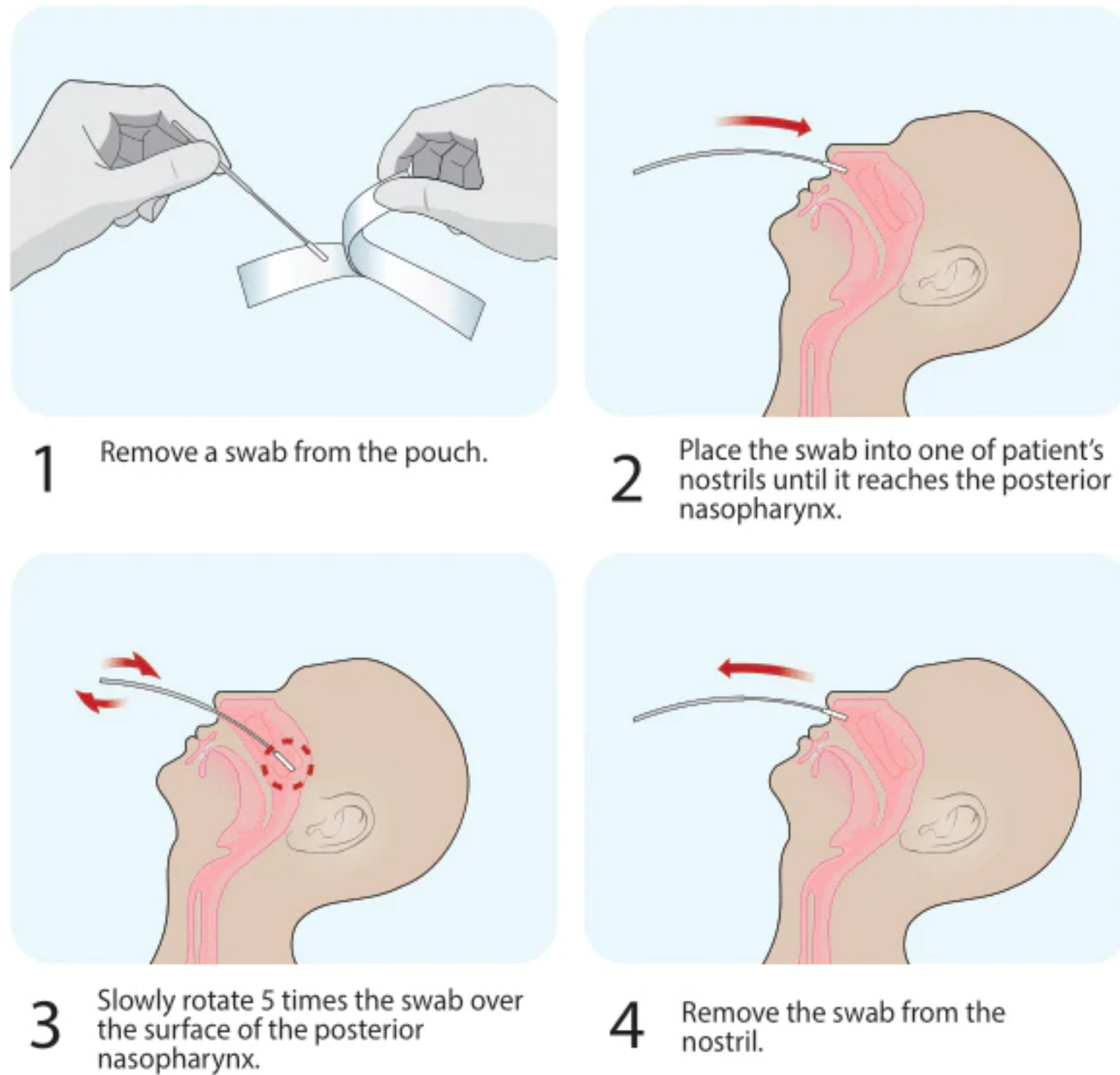
## Features

- ✓ Fast and easy to use in Point-of-Care setting
- ✓ Qualitatively detect the SARS-CoV-2 nucleocapsid protein
- ✓ Use for nasopharyngeal (NP) and nasal swab specimen
- ✓ Fast results only in 10 minutes
- ✓ No special equipment or training required
- ✓ All-in-one package
- ✓ Identify and monitor individual's current infection status to COVID-19.

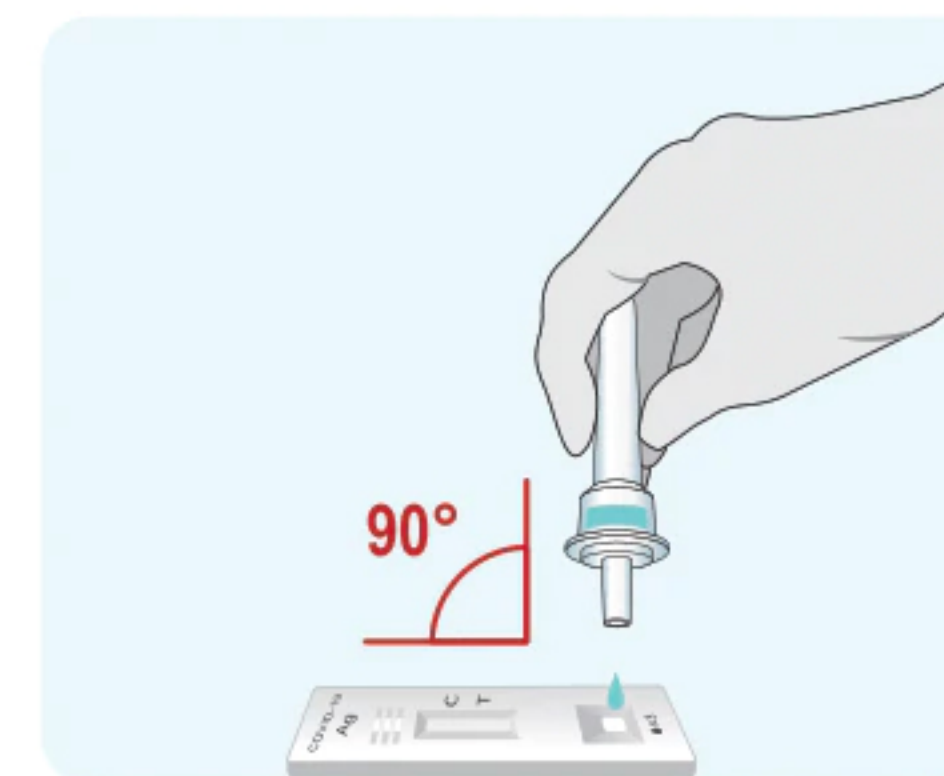
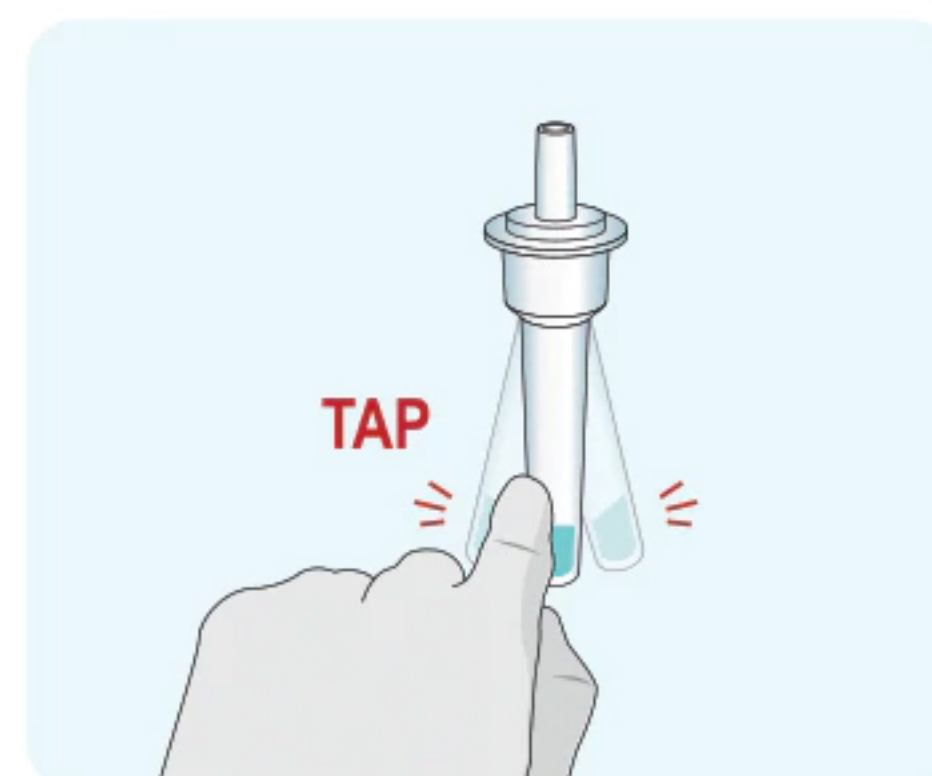
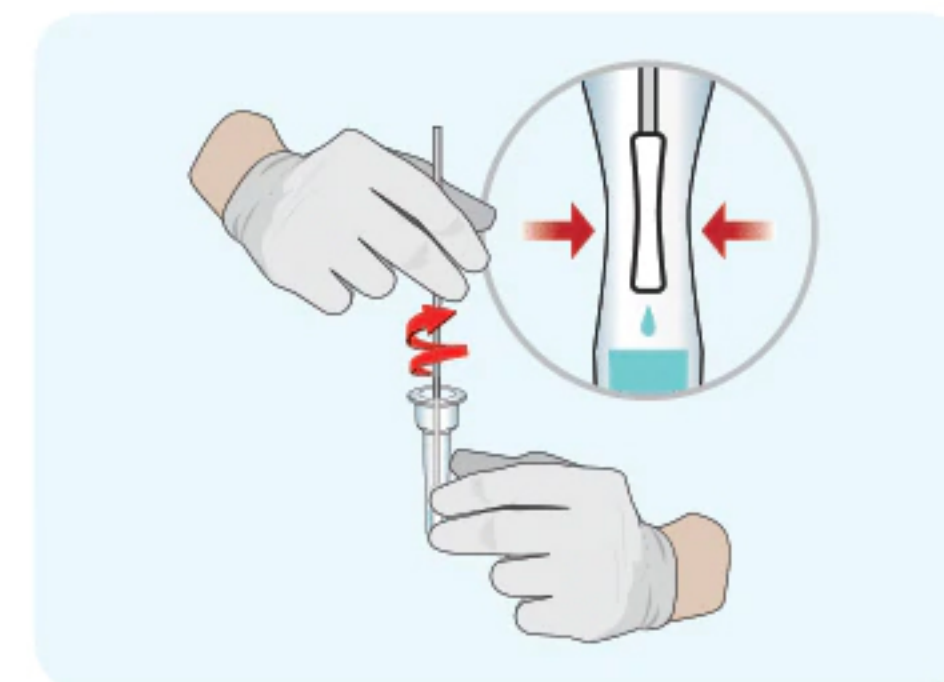
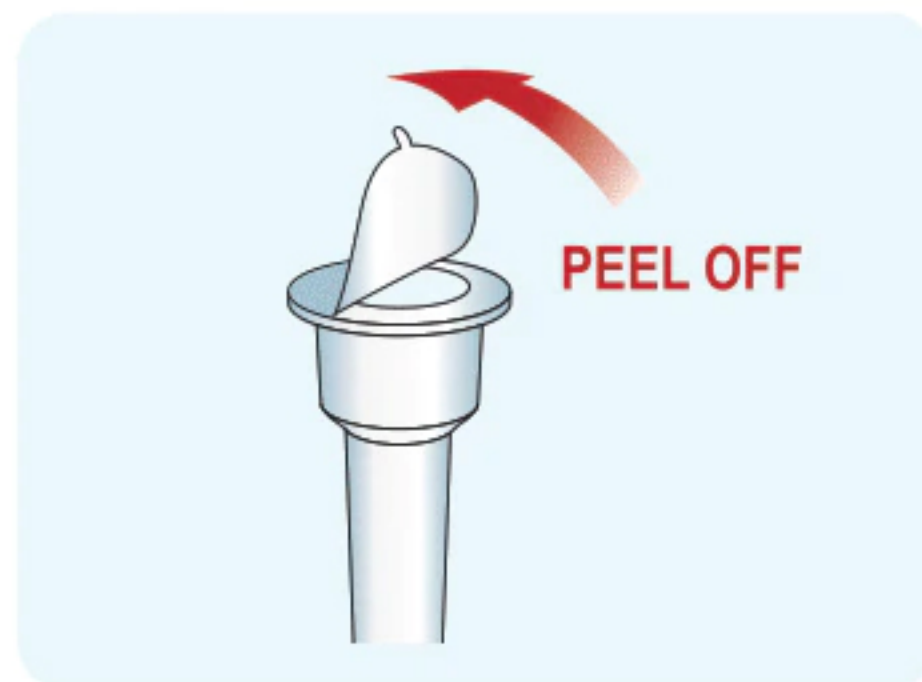
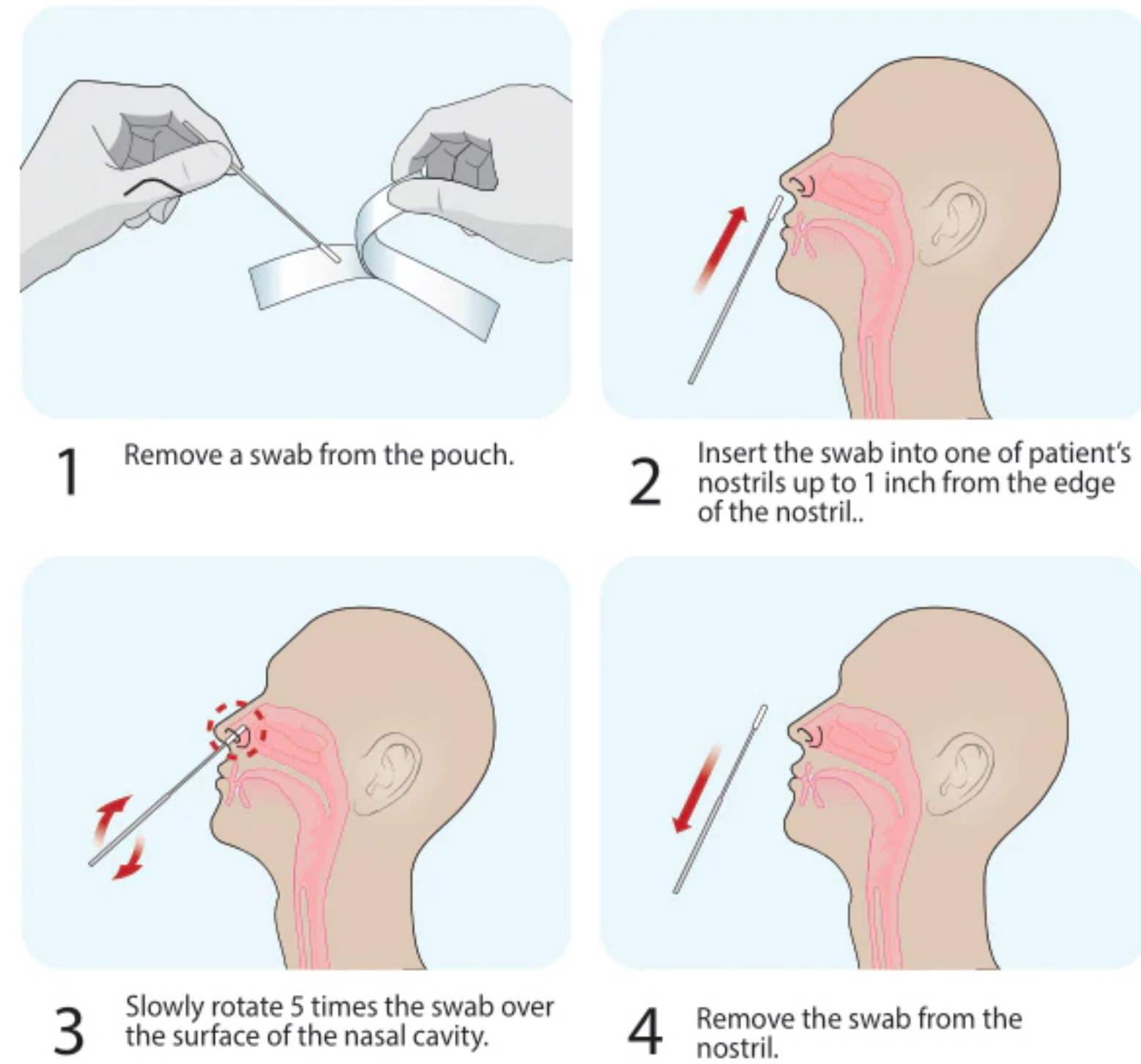


# Test Procedures

## Nasopharyngeal (NP) Swab Collection



## Nasal Swab Collection



**Start the timer**

10 min

Read the result at 10 minutes. The test result should not be read after 15 minutes.

### Result Interpretation

**SARS-CoV-2 Positive**

**Negative**

**Invalid**

**NOTES**

- The color intensity in the test region will vary depending on the amount of SARS-CoV-2 antigen present in the sample.
- Any faint colored line(s) in the test region(s) should be considered as positive.

**NOTES**

- Re-run the test one time using the remaining specimen in the extraction vial.

## Order Information

Cat. No.	RCHM-02071
Package Unit	20 tests/kit
Kit Component	20 Test devices 20 Extraction vial/cap 20 Specimen collection swab 1 Positive control swab 1 Negative control swab 1 Package insert 1 QRI